

HANG TIME ON JONES STREET

For Any Instrument, Color Video, and Digital Sound

Reynold Weidenaar

C Version (Concert Pitch), Full Score

INTRODUCTION

This piece may be performed by any solo instrument. It is a note-oriented part without idiomatic writing for any particular instrument. This part is scored in C. Performance scores with transposed parts in B-flat and E-flat are available.

NOTES ON PERFORMANCE

RANGE

The written range is too wide for some instruments. It extends from an octave below middle C to G above the treble clef. The performer may transpose octaves wherever necessary. Or, if desired, a pitch transposer may be used to generate the written pitches.

RAPID NOTES

There are some arpeggios and other figures that may be too rapid for certain instruments. The performer may freely delete notes where necessary to make these sections playable.

TIME LINE

The music is scored proportionally on a time line. The performer may wish to use a stopwatch to assist in following the tape part. Do NOT start the stopwatch when the video picture starts. Start the stopwatch when the audio starts (5 1/3 seconds into the video). That is the 0:00 start point in the score. The notes in the score are placed very accurately on the time line; any unevenness in spacing is quite intentional and should be reproduced in performance as faithfully as possible (except in section 14, which is metered and should be played evenly). **Stopwatch advice:** Get a cheap plastic stopwatch with a large display at a sports store or discount store. This is perfectly accurate for a 10-minute duration. Put it on a second music stand.

VISUAL CUES

There are no visual cues. The accompaniment is recorded on the soundtrack of the video. It is not necessary to watch the video for cues. However, scene changes may aid synchronization and are indicated in the score.

ACCIDENTALS

Accidentals apply only to the pitch where they occur, not to octave transpositions. They apply to the end of the staff. In section 14, which has a meter and bar lines, accidentals apply within the measure only.

ABBREVIATIONS

Bg. = background, Gl. = glissando, Perc. = percussion, S/h = sample and hold, Snd. = sound.

DESCRIPTIONS OF SOUNDS

There are numerous descriptors in the tape part: motoric, stair steps, bird scratches, cymbal, baby crying, fire crackling, soft bird call, whirl drum, brushes, pigeons. These are not the actual sounds, but similarities that may aid in recognizing sounds and cues. Male and female voice sounds, however, are authentic.

MIDI SOLO DEMO

A MIDI solo demo recording is available to assist the performer in learning the part. The solo part was performed on a keyboard using a violin/cello sound, and mixed with the tape accompaniment. The MIDI tone-generator sound is somewhat mechanical. However, it is an accurate guide to pitches and rhythms.

AMPLIFICATION

Amplifying the soloist to provide suitable volume and balance with the tape part is recommended, but in some cases (such as a small hall with excellent acoustics) it may not be necessary.

© 2002 Magnetic Music Publishing Co. (ASCAP)
20 Jane Street, Suite 2C, New York, NY 10014-1945, U.S.A.
212.255.8527
<http://magneticmusic.ws>

Hang Time on Jones Street

For Any Instrument, Color Video, and Digital Sound

Reynold Weidenaar

Part A, Sec. 1

Scene 1, -0:05 1/3

Scene 2, 0:04



Instr. in C

f *mf* *mp*

Tape

Percussion sounds

Fat percussion sounds (semi-pitched)

Faster

0 1 2 3 4 5 6 7 8 9

I.

mp *mf* *f* *mf*

Giggly conversation, voice sounds

Squeal voice sound

Boyband

T.

Very fast

10 11 12 13 14 15 16 17 18 19

Scene 3, 0:24 5/6



I.

pp *mf*

diat. gl.

Tentative

T.

Hollow sound

Muddy background sound

Motivic sound - accel.

20 21 22 23 24 25 26 27 28 29

I.

Confident

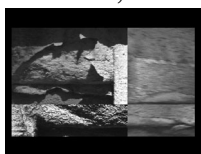
T.

gl. *f* *mf* *mp*

Motivic snd. Gate shut

30 31 32 33 34 35 36 37 38 39

Scene 4, 0:41 2/3



3

I.

Uneven, slightly lurching

mf *f* *mf* *f*

Female voice Boyband

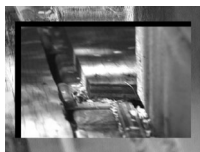
T.

"eh-hew" "eh"

Chattering

40 41 42 43 44 45 46 47 48 49

Scene 5, 0:53 3/4



I.

mf

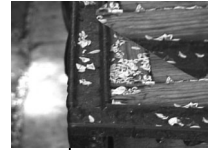
Voice

T.

(Chattering)

Motivic snd. - accel.

50 51 52 53 54 55 56 57 58 59



4

Tenacious

mf

Fast stairsteps Fat perc.

1:00 1 2 3 4 5 6 7 8 9

Detailed description: This musical score block is for a section starting at 1:00. It features two staves: I. (Soprano) and T. (Piano). The Soprano staff has a treble clef and contains two musical phrases, both marked *mf*. The Piano staff has a grand staff (treble and bass clefs) and contains a series of rhythmic patterns. The first pattern is a series of vertical lines, followed by a 'Fast stairsteps' pattern. The text 'Fat perc.' is written above the piano staff. A box with the number '4' is positioned above the first measure. A time signature '1:00' is at the beginning, and measures are numbered 1 through 9 along the bottom.

5

mp *diat. gl. mf* *f* *ff*

Female voices

Fluttery

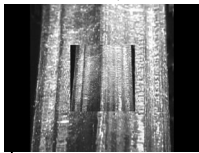
"ehhahh" "ahh" "eww" "err"

Rumble Scrape Grinding rumble

1:10 11 12 13 14 15 16 17 18 19

Detailed description: This musical score block is for a section starting at 1:10. It features two staves: I. (Soprano) and T. (Piano). The Soprano staff has a treble clef and contains a long, sweeping melodic line that starts at *mp*, passes through *mf* (with 'diat. gl.' written above it), *f*, and ends at *ff*. The Piano staff has a grand staff and contains various sound effects: 'Rumble' (a dark oval), 'Scrape' (a grey oval), and 'Grinding rumble' (a thick black bar). Above the piano staff, 'Female voices' are indicated with a dotted line and the text '"ehhahh" "ahh" "eww" "err"'. The word 'Fluttery' is written above the piano staff. A box with the number '5' is positioned above the first measure. A time signature '1:10' is at the beginning, and measures are numbered 11 through 19 along the bottom.

Scene 7, 1:21 1/2



(Female voices)

ehh ehh ahh ehh"

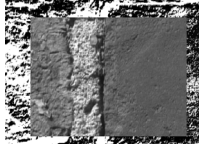
(Grinding rumble)

1:20 21 22 23 24 25 26 27 28 29

Detailed description: This musical score block is for a section starting at 1:20. It features two staves: I. (Soprano) and T. (Piano). The Soprano staff has a treble clef and contains a series of notes, some with accents, ending at *f*. The Piano staff has a grand staff and contains sound effects: '(Grinding rumble)' (a thick black bar) and '(Female voices)' (a dotted line with the text 'ehh ehh ahh ehh"'). A time signature '1:20' is at the beginning, and measures are numbered 21 through 29 along the bottom.

6

Scene 8, 1:34



I. *mf* *f* *Exuberant*

T. *Dissolve to soft, grinding sound* *Muddy boyband* *Fast stairsteps*

1:30 31 32 33 34 35 36 37 38 39

7

I. *ff*

T. *Soft squeals* *Fat perc.* *Female conversation* *"hoo"*

1:40 41 42 43 44 45 46 47 48 49

2-second line

I.

T.

1:50 51

10-second line
Hesitant *Confident*

I. *mf* *f* *mf*

gl. *“hoo hoo”*

T. (Female conversation) *“ahhh...ee...ü”* Woody

1:52 53 54 55 56 57 58 59 2:00 1

Scene 9, 2:06 2/3



I. *mf* (Match tape) gl.

T. Muddy Female voice gl. Male voice, tongue tremolo gl.

2:02 3 4 5 6 7 8 9 2:10 11

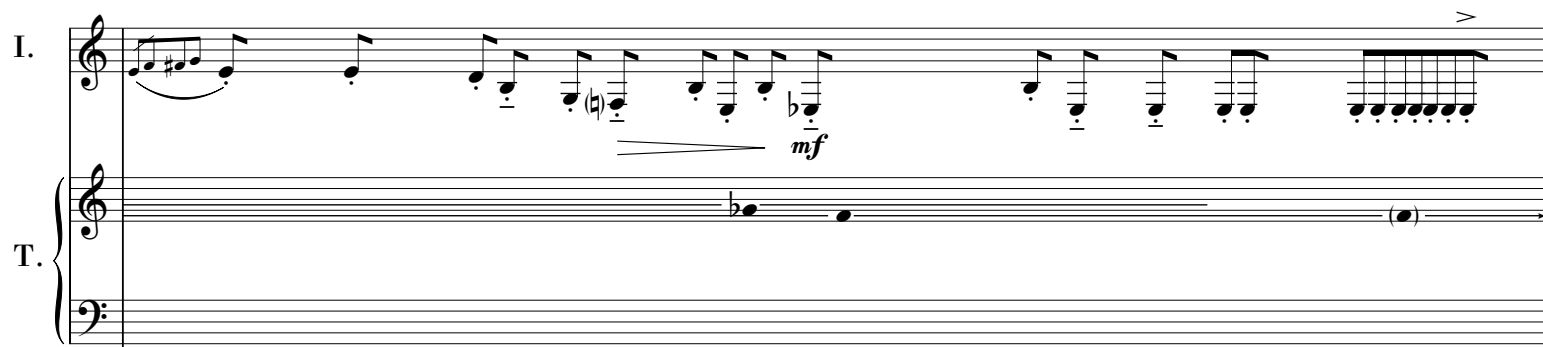
Scene 10, 2:18 1/4

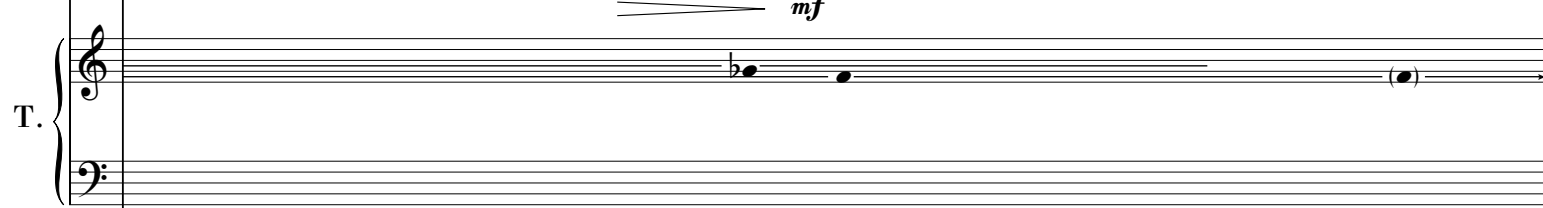


I. *p* *mf* *mf* *f*

T. Whir Bird scratches Female voice whirring

2:12 13 14 15 16 17 18 19 2:20 21

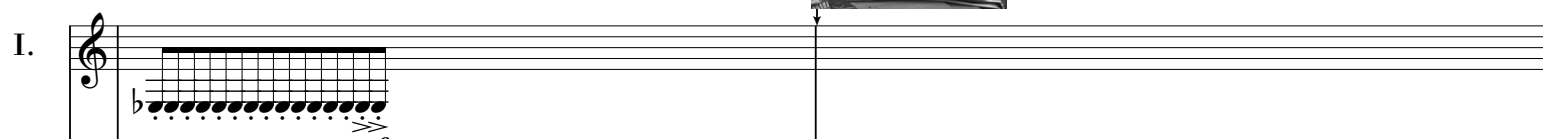
I. 

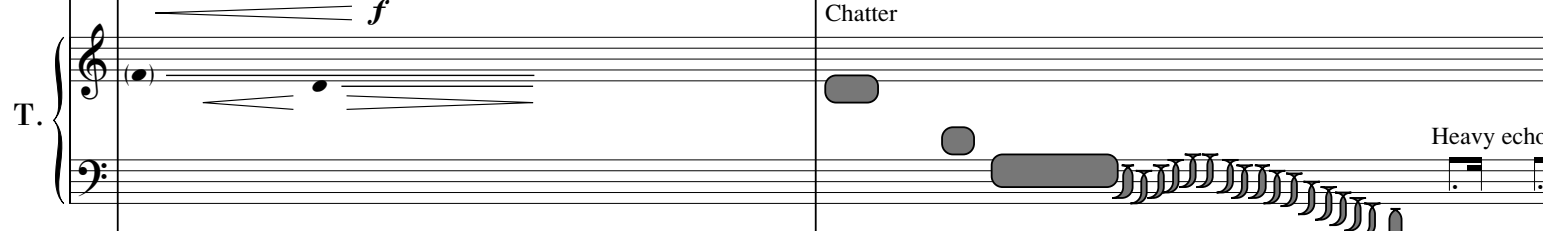
T. 

2:22 23 24 25 26 27 28 29 2:30 31

Part B, Sec. 8
Scene 11, 2:36 5/6



I. 

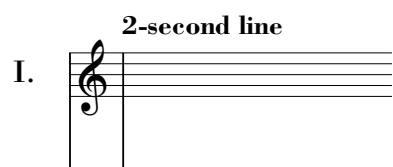
T. 


2:32 33 34 35 36 37 38 39 2:40 41

Chatter

Heavy echo

2-second line

I. 

T. 

2:42 43

10-second line

I. *mf* *f* *mf*

tr diat. gl. tr tr

T. Warble ↑ ↓ ↑

Male voice *p* "hoo"
(b) (b)

2:44 45 46 47 48 49 2:50 51 52 53

I. *f* *mf* *f* *mf* 9

T. n

2:54 55 56 57 58 59 3:00 1 2 3

I. *mp* *mf*

T. Hollow Cymbal

Baby crying

"ahh"

Male voice "come to me"

Background: rustling

3:04 5 6 7 8 9 3:10 11 12 13

6-second line

I. *mp*

T. **Bend**

Low rattle

3:14 15 16 17 18 19

Scene 12, 3:23



10-second line

I. *mf* *f* *mf*

T. **Female voice**
"ah- chew" "ah"

Thin rattle

Soft whistle

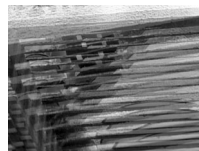
Pitched rattle

Fire crackling

10

3:20 21 22 23 24 25 26 27 28 29

Scene 13, 3:37



I. *f* *mp*

T. **Female voice**
"eh"

Boyband - chatter

(Fire crackling)

"eh" *pp*

3:30 31 32 33 34 35 36 37 38 39

I. *mf* *f* *mf* *f*

T. Sample and hold sound Bg: chatter Resonance

3:40 41 42 43 44 45 46 47 48 49

I. *mf*

T. Soft chatter/chugging n Female voice Thin rattle

11

3:50 51 52 53 54 55 56 57 58 59

Scene 14, 4:08 1/3



I. *mp* *mf* *f*

T. Low rattle Thin rattle Fat Thin

4:00 1 2 3 4 5 6 7 8 9

I. *mf* *f* Thin rattle

T. Edgy

4:10 11 12 13 14 15 16 17 18 19

Scene 15, 4:24



I. *mf* *p* *f* *mf*

T. Chatter, burble Drum Low chatter

4:20 21 22 23 24 25 26 27 28 29

12

I. *mp* *n*

T. Soft bird call Low chatter *p* Rattle

4:30 31 32 33 34 35 36 37 38 39

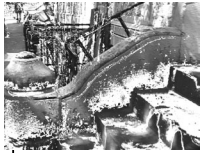
I. *mf* *f*

T. Female voice Slight phasing and s/h Female voice Thin percussion

Whir drum Slow rattle Rumble

4:40 41 42 43 44 45 46 47 48 49

Scene 16, 4:52 3/4



I. (Female voice) Thin percussion Processed voice

T. Soft rumble "ah" n

4:50 51 52 53 54 55 56 57 58 59

13

I. *mf* *f* *ff*

T. Soft, pure resonances in windy, diffuse background Slight phasing Distorted Phasing Burbly background

5:00 1 2 3 4 5 6 7 8 9

I. *f*

T. (Resonances)

High chatter Thin percussion

5:10 11 12 13 14 15 16 17 18 19

I. *mf* *ff* *f* *mp*

Match tape pulse

High percussion Pure resonance

T. Thin percussion *n* Chug *f*

5:20 21 22 23 24 25 26 27 28 29

I. *mf* *mp* *p*

tr tr tr

High, thin Ring modulation Thin, ringy Thin Thin, ringy Tiny

T. *pp* *mf* *pp* Soft resonances *n*

5:30 31 32 33 34 35 36 37 38 39

Part C, Sec. 14
Scene 17, 5:41 1/3



I. *Leggiero*
f

T. *f*
High whir

5:40 41 42 43 44 45 46 47 48 49

Detailed description: This musical score block covers measures 41 to 49. The vocal line (I.) begins at measure 41 with a treble clef, a key signature of three flats, and a 6/8 time signature. It features a melodic line with a forte (*f*) dynamic and a *Leggiero* marking. The piano accompaniment (T.) consists of a steady eighth-note pattern in the right hand and a bass line with some rests in the left hand, also marked *f*. A grey bar labeled "High whir" spans measures 47 and 48. The time signature changes to 9/8 at the end of the block.

I. *mf*

T.

5:50 51 52 53 54 55 56 57 58 59

Detailed description: This musical score block covers measures 50 to 59. The vocal line (I.) starts at measure 50 with a treble clef and a key signature of three flats. It features a melodic line with a mezzo-forte (*mf*) dynamic. The piano accompaniment (T.) has a simple harmonic accompaniment in the right hand and a bass line in the left hand.

Scene 18, 6:01



I. *f*

T.

6:00 1 2 3 4 5 6 7 8 9

Detailed description: This musical score block covers measures 6:00 to 6:09. The vocal line (I.) begins at measure 6:00 with a treble clef and a key signature of three flats. It features a melodic line with a forte (*f*) dynamic. The piano accompaniment (T.) has a simple harmonic accompaniment in the right hand and a bass line in the left hand.

I. *mf*

T. (b) (b) (b) (b) (b) (b) (b) (b) (b)

6:10 11 12 13 14 15 16 17 18 19

I. *mp* *mf* *p*

T. Brushes Metallic Metallic

6:20 21 22 23 24 25 26 27 28 29

15

I. *f*

T. *pp* Tenor pigeons

Vague ringing, rolling Hiss

6:30 31 32 33 34 35 36 37 38 39

Scene 19, 6:42 3/4



8-second line

I. *Heavy*
ff

T. Pigeons Rattle Chirps $\wedge \wedge \wedge \wedge$

6:40 41 42 43 44 45 46 47

Detailed description: This musical score for Scene 19, 6:42 3/4, features an 8-second line. The vocal line (I.) is marked *Heavy* and *ff*, with a slur over measures 43-46. The piano accompaniment (T.) includes 'Pigeons' (measures 41-42), 'Rattle' (measures 43-44), and 'Chirps' (measures 46-47). The time signature is 3/4.

10-second line

I. *Jazzy* *Plaintive* *Jocular*
f *mf*

T. Soft motor Soft rattle

6:48 49 50 51 52 53 54 55 56 57

Detailed description: This musical score for Scene 19, 6:48, features a 10-second line. The vocal line (I.) is marked *f* and *mf*, with mood markings *Jazzy*, *Plaintive*, and *Jocular*. The piano accompaniment (T.) includes 'Soft motor' (measures 50-51) and 'Soft rattle' (measures 53-54). The time signature is 3/4.

Scene 20, 7:07 1/3



I. *Resigned* *Placid*
mp

T. (Soft rattle) *p* *n*

6:58 59 7:00 1 2 3 4 5 6 7

Detailed description: This musical score for Scene 20, 7:07 1/3, features a 10-second line. The vocal line (I.) is marked *mp*, with mood markings *Resigned* and *Placid*. The piano accompaniment (T.) includes '(Soft rattle)' (measures 58-59) and a *p* dynamic (measures 6-7). The time signature is 3/4.

I. *Uneven, lurching*

T. *Whir*

7:08 9 10 11 12 13 14 15 16 17

I. *mf*

T. *High white noise*
Soft motor

7:18 19 20 21 22 23 24 25 26 27

I. **6-second line**
Even

T. *Windy background*
Mellow clang
Contralto
gl.

7:28 29 30 31 32 33

I. *10-second line* *ff* *tr* *Uneven*

T. *Transposed voice* *Heavy echo*

7:34 35 36 37 38 39 40 41 42 43

Scene 21, 7:46



I. *Even* *Deliberate*

T. *Windy, vague* *Soft motors*

7:44 45 46 47 48 49 50 51 52 53

I. *tr* *mp*

T. *Many sine resonances*

7:54 55 56 57 58 59 8:00 1 2 3

I. *mf* Many sine resonances

T. Bend Clack Whir Low, mellow Crickets

Scene 22, 8:18



I. *f*

T. White noise

I. *p*

T.

I.

T.

Low, thick

8:34 35 36 37 38 39 40 41 42 43

ff

I.

T.

Choral voices

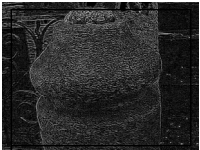
Shriek

"eh" "ooh" "reh"

Rumble

8:44 45 46 47 48 49 50 51 52 53

Scene 23, 8:54 1/3



Scene 24, 8:57



End credits duration 0:55
End of video 9:52

I.

T.

March 20, 2002
20 Jane St., New York, N.Y.

8:54 55 56